



PERFORMING ARTS CENTER
at ROCKWELL HALL

BUFFALO STATE • The State University of New York

Venue Specs and General Information

Table of Contents

1. General Contact Information
2. Approach & Parking
3. Artist Entrance
4. Stage Load-in Truck Dock
5. Green Rooms, Dressing Rooms, Building Navigation
6. Line Set Schedule Section View
7. Stage Dimensions
8. Downstage Lip & Aisle



PERFORMING ARTS CENTER
at ROCKWELL HALL

BUFFALO STATE • The State University of New York

Venue Specs and General Information

General Contact Information

Box Office Phone: 716.878.3005	General Email: rhpac@buffalostate.edu	Mailing Address: Rockwell Hall Room 210 1300 Elmwood Ave Buffalo NY 14222
--	---	---

Director:

Andrew Binder

716-878-3599

binderad@buffalostate.edu

Production Manager & DOS Contact:

Andrew Borchik

315-374-7145

borchiah@buffalostate.edu

Box Office and Audience Services Director:

Anjuli Vecchies

716-465-4486

vecchiad@buffalostate.edu



PERFORMING ARTS CENTER
at ROCKWELL HALL

BUFFALO STATE • The State University of New York

Venue Specs and General Information

Approach and Parking

- All Artist & Production Vehicles will enter [PARKING LOT I-30 off Iroquois Drive](#)



- Reserved spots or entire parking lot closure must be arranged with the venue Director or Production Manager at least 1 week in advance of arrival. Overnight arrivals are possible with confirmation from the campus Parking Services and University Police.



PERFORMING ARTS CENTER
at ROCKWELL HALL

BUFFALO STATE • The State University of New York

Venue Specs and General Information

Artist Entrance

- 6 steps outside + 4 steps inside leads direct onto STAGE LEFT wing





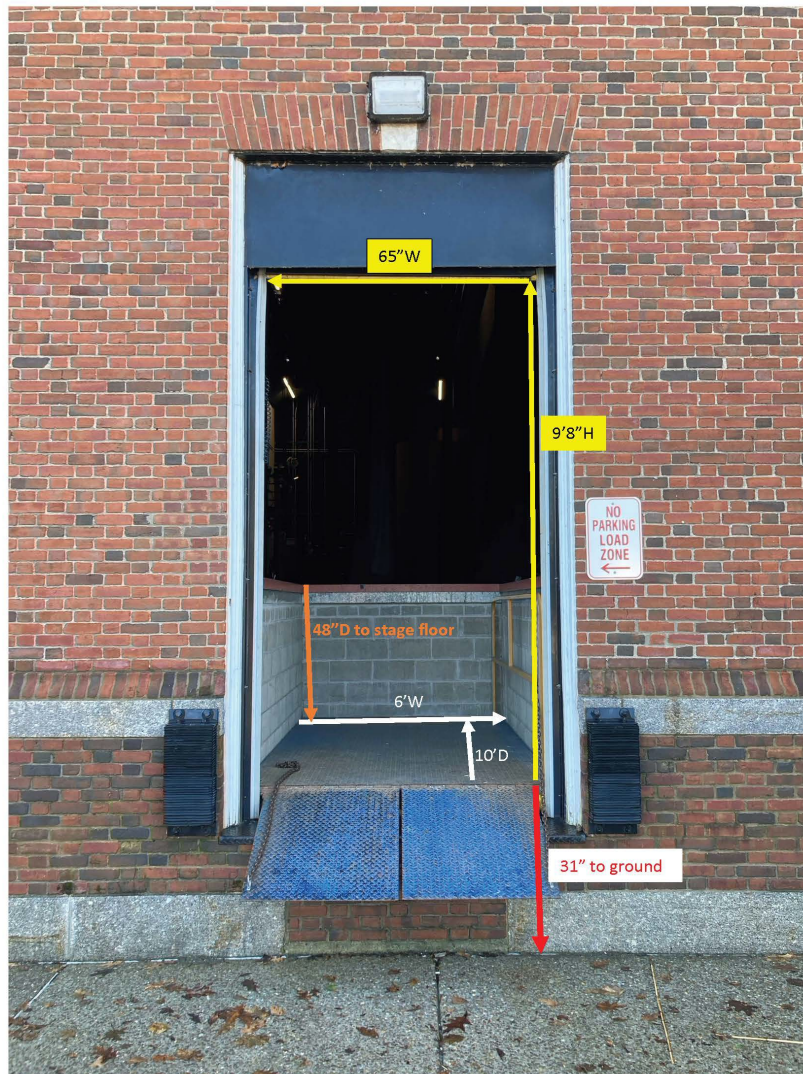
PERFORMING ARTS CENTER
at ROCKWELL HALL

BUFFALO STATE • The State University of New York

Venue Specs and General Information

Truck Dock to Stage Level

- Blue Platform is a hydraulic lift
- An alternative ground-level (case push) load-in is available:
 - Elevator to basement + 200' push + second elevator to stage





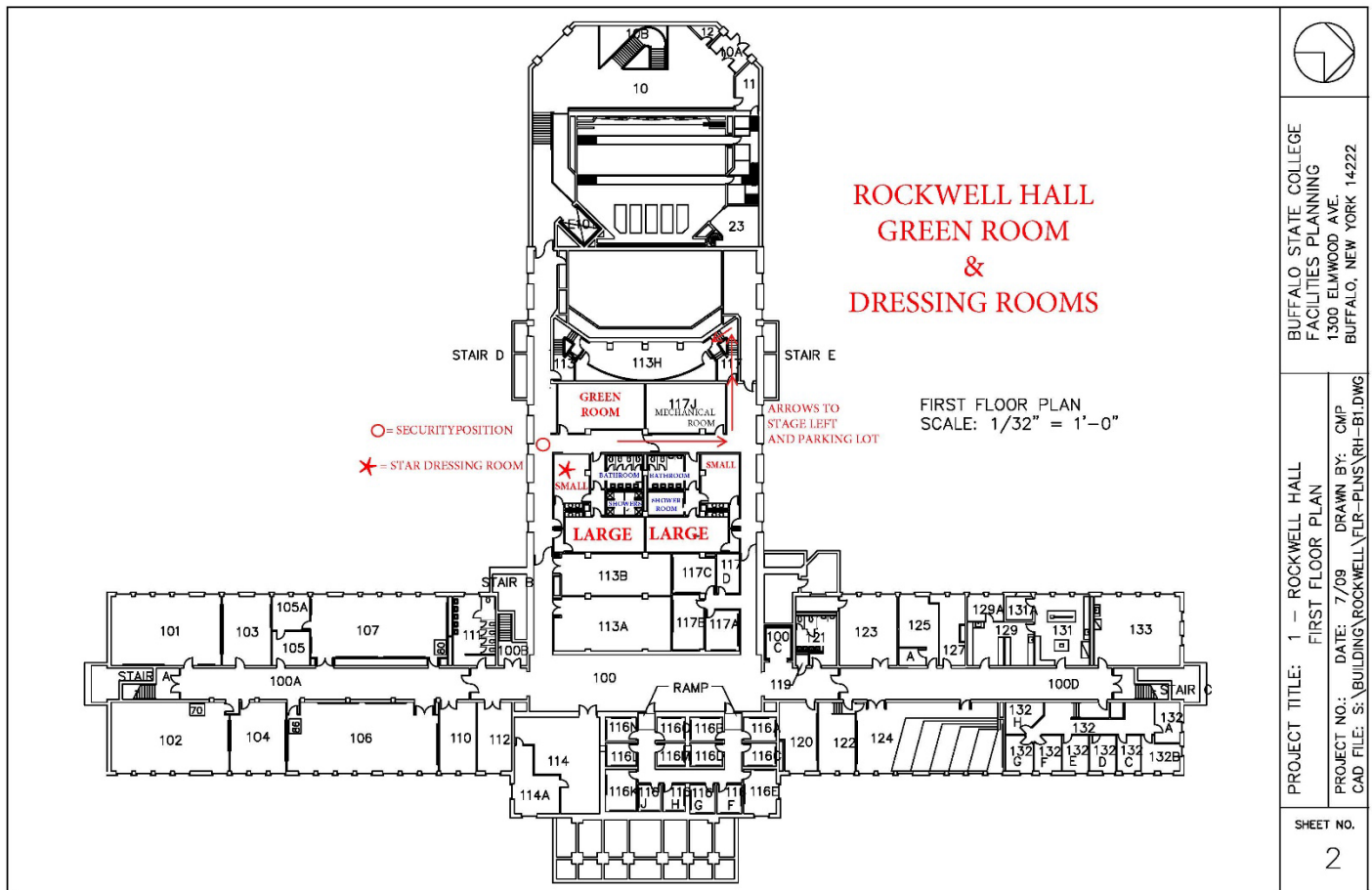
PERFORMING ARTS CENTER
at ROCKWELL HALL

BUFFALO STATE • The State University of New York

Venue Specs and General Information

Green Room, Dressing Rooms, Building Navigation

- GREEN ROOM and 4 DRESSING ROOMS are in the basement level (level 100) of the building.
- STAIRWELL access to both STAGE LEFT and STAGE RIGHT
- ELEVATOR ACCESS to UPSTAGE RIGHT



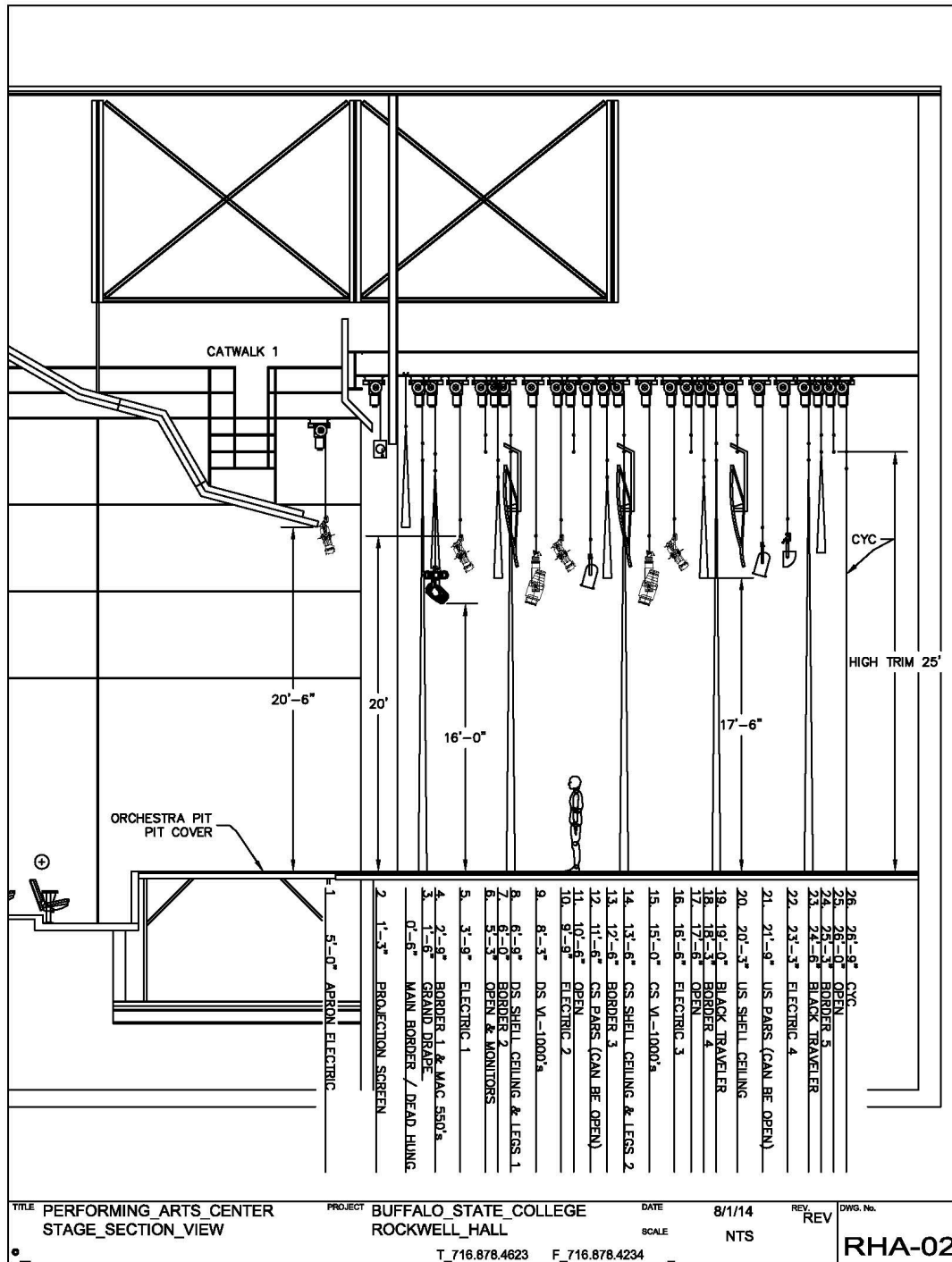


PERFORMING ARTS CENTER
at ROCKWELL HALL

BUFFALO STATE • The State University of New York

Venue Specs and General Information

Line Set Schedule Section View



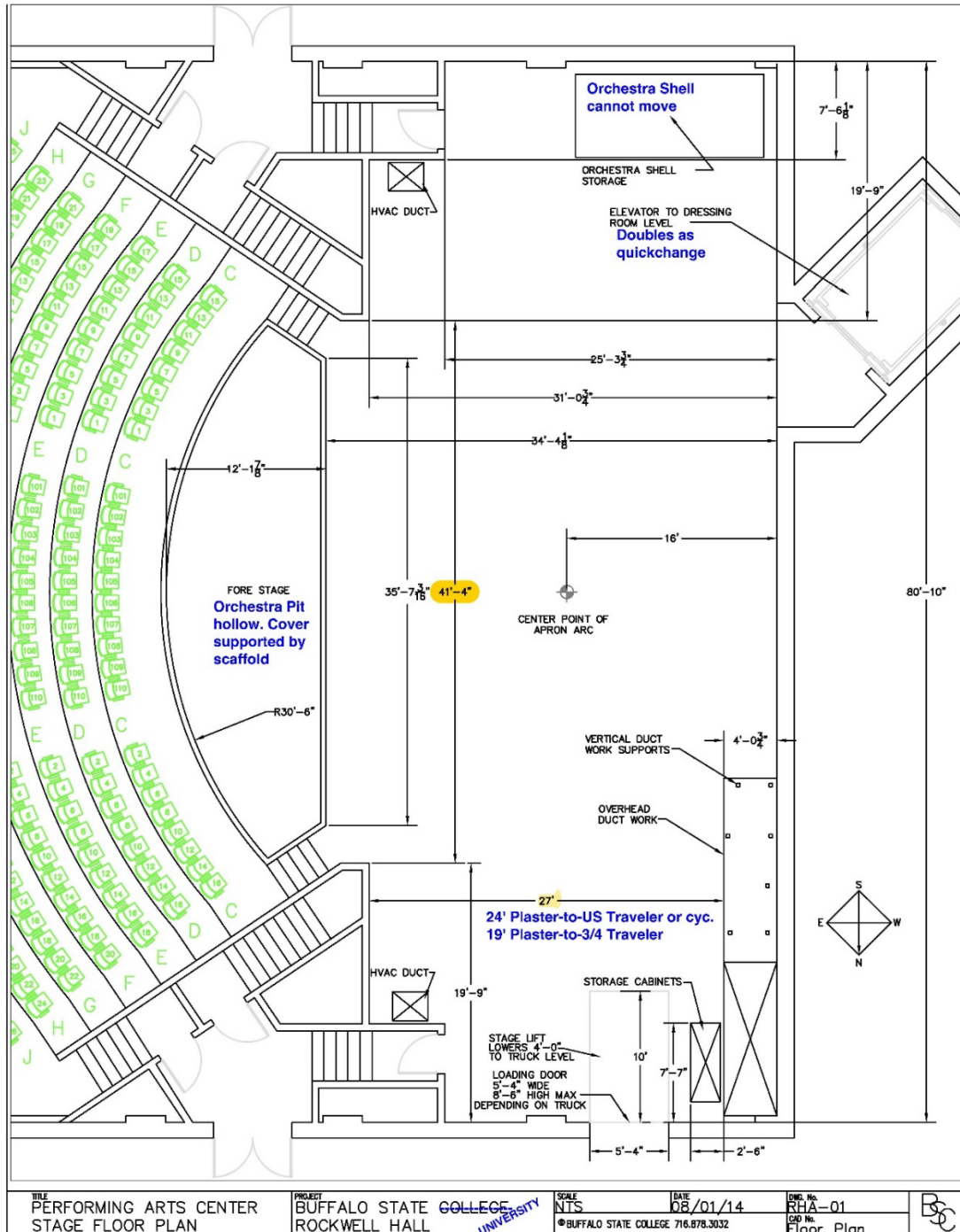


PERFORMING ARTS CENTER
at ROCKWELL HALL

BUFFALO STATE • The State University of New York

Venue Specs and General Information

STAGE DIMENSIONS





PERFORMING ARTS CENTER
at ROCKWELL HALL

BUFFALO STATE • The State University of New York

Venue Specs and General Information

DOWNSTAGE LIP

