



PERFORMING ARTS CENTER *at* ROCKWELL HALL

BUFFALO STATE • The State University of New York

VENUE GUIDE

Table of Contents

1. General Contact Information
2. Approach & Parking
3. Artist Entrance
4. Stage Load-in Truck Dock
5. Green Rooms, Dressing Rooms, Building Navigation
6. Line Set Schedule Section View
7. Stage Dimensions
8. Stage Power Switch & Stage Elevator
9. Downstage Lip & Aisle



PERFORMING ARTS CENTER *at* ROCKWELL HALL

BUFFALO STATE • The State University of New York

VENUE GUIDE

General Contact Information

Box Office Phone: 716.878.3005	General Email: rhpac@buffalostate.edu	Mailing Address: Rockwell Hall Room 210 1300 Elmwood Ave Buffalo NY 14222
--	---	---

Director:

Andrew Binder 716-878-3599 binderad@buffalostate.edu

Production Manager & DOS Contact:

Andrew Borchik 315-374-7145 borchiah@buffalostate.edu

Box Office and Audience Services Director:

Anjuli Vecchies vecchiad@buffalostate.edu



PERFORMING ARTS CENTER *at* ROCKWELL HALL

BUFFALO STATE • The State University of New York

VENUE GUIDE

Approach and Parking

- All Artist & Production Vehicles will enter [PARKING LOT I-30 off Iroquois Drive](#)
- **Reserved spots or entire parking lot closure must be arranged with the venue Director or Production Manager *at least 1 week in advance of arrival.***
- Overnight arrivals are possible with confirmation from the campus Parking Services and University Police officials





PERFORMING ARTS CENTER *at* ROCKWELL HALL

BUFFALO STATE • The State University of New York

VENUE GUIDE

Artist Entrance

- 6 steps outside + 4 steps inside lead directly onto STAGE LEFT wing





PERFORMING ARTS CENTER *at* ROCKWELL HALL

BUFFALO STATE • The State University of New York

VENUE GUIDE

Truck Dock to Stage Level

- Blue Platform is a hydraulic lift
- An alternative ground-level (case push) load-in is available via ground-level Elevator to basement + 200' push + elevator to Upstage Right

BUFFALO STATE COLLEGE PERFORMING ARTS CENTER





PERFORMING ARTS CENTER *at* ROCKWELL HALL

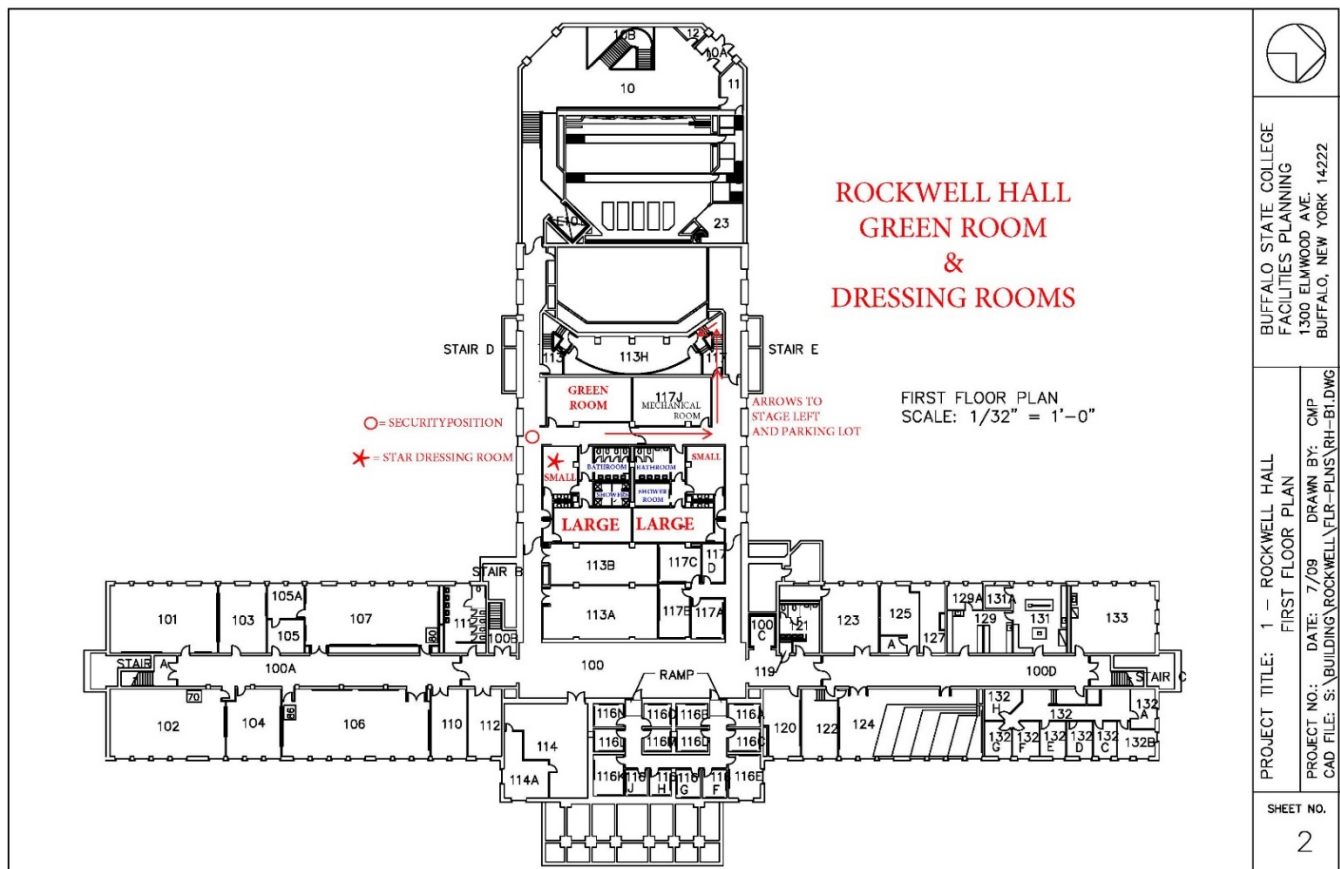
BUFFALO STATE • The State University of New York

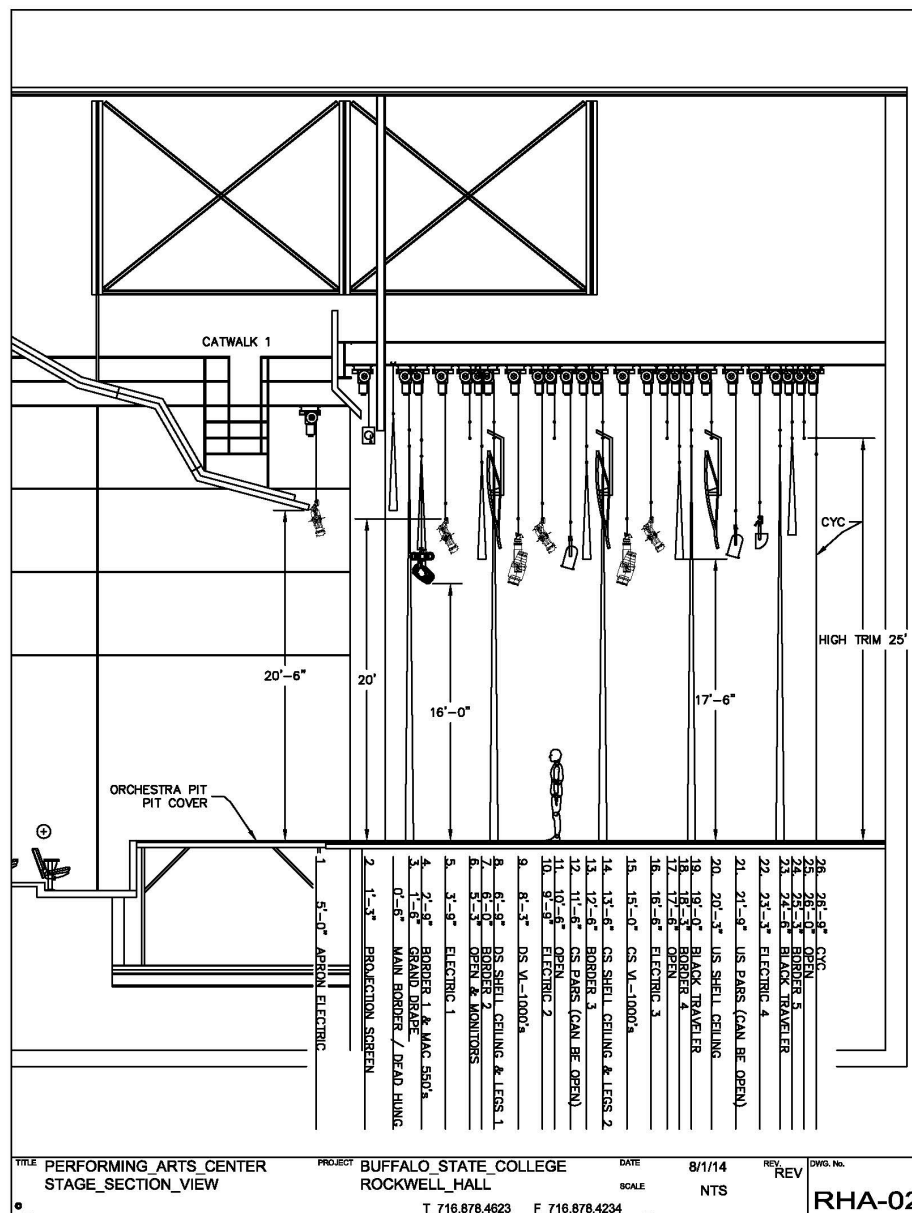
VENUE GUIDE

Green Room, Dressing Rooms,

Building Navigation

- GREEN ROOM and 4 DRESSING ROOMS are at basement level (level 100)
- STAIRWELL access to both STAGE LEFT and STAGE RIGHT wings
- ELEVATOR ACCESS to UPSTAGE RIGHT



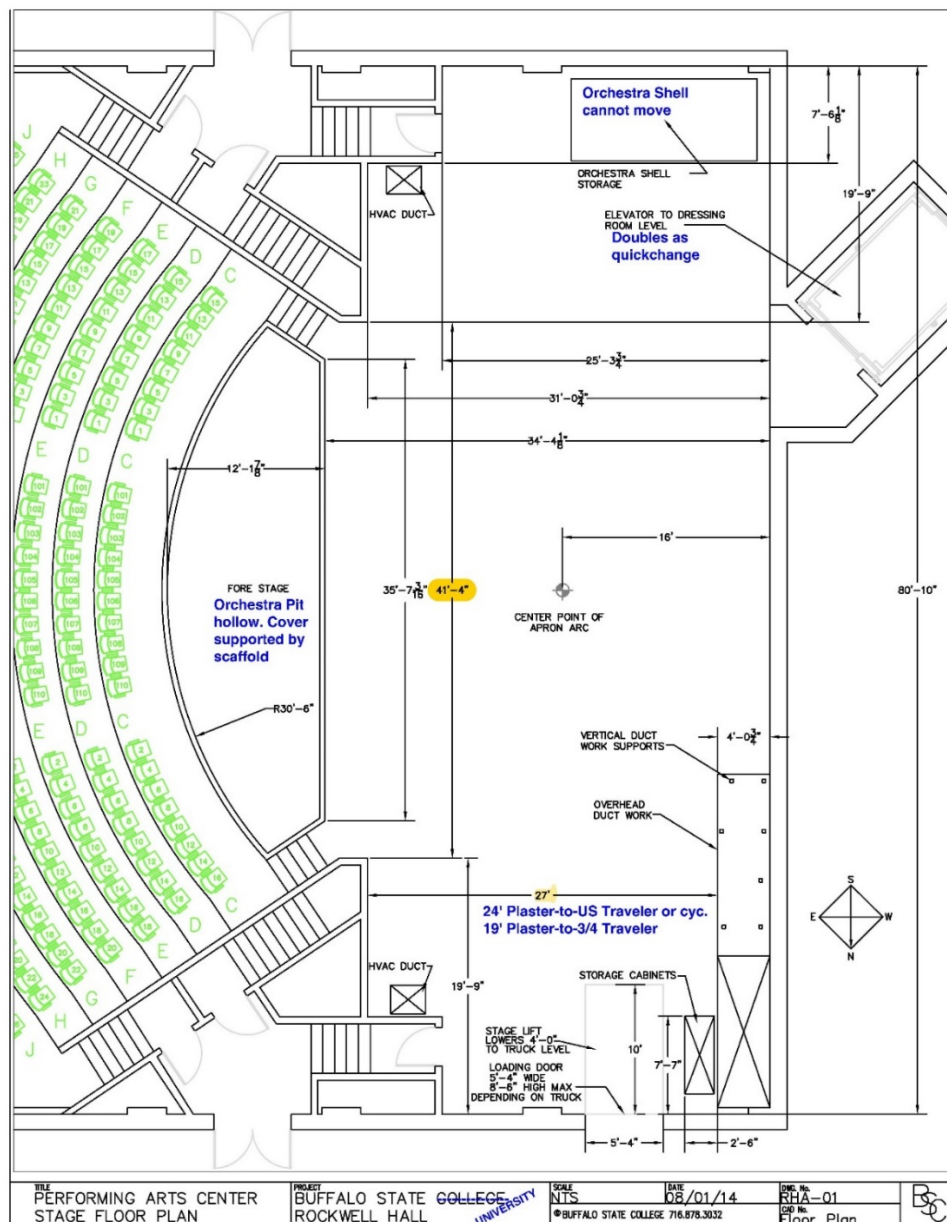




PERFORMING ARTS CENTER *at* ROCKWELL HALL

BUFFALO STATE • The State University of New York

VENUE GUIDE STAGE DIMENSIONS





PERFORMING ARTS CENTER *at* ROCKWELL HALL

BUFFALO STATE • The State University of New York

VENUE GUIDE

100-Amp 3-Phase Company Switch



Stage Elevator



- Both located UPSTAGE RIGHT
- Stage elevator provides direct service from dressing room level to stage, and can be locked to stage level to serve as a large quick-change room



PERFORMING ARTS CENTER *at* ROCKWELL HALL

BUFFALO STATE • The State University of New York

VENUE GUIDE

DOWNSTAGE LIP

